



State Immunization Requirements Processing

Overview

This document describes the different steps involved with;

- establishing your states immunization requirements
- how the system is able to automate portions of immunization tracking on a daily basis
- online information and report generation of immunization lists such as Student Non-Compliance List.

Step 1. Establishing Immunization Requirements

First you will need to enter the state immunization guidelines for your state. Lumen Software can not publish these as many clients have named their immunizations different from those of the state. However it is not hard to establish and we have provided a sample scenario below to assist with setting this up for your states specific needs.

Select EzStart, **District Health Records Management, State Health Definitions**. It is this application where you will establish the states immunization processing requirements to meet compliance regulations found in your state for students to be allowed admission school and also in most cases for required state reports. Below is a screen shot of the initial screen of this application. You are first presented with a list of existing **State Immunization Requirements** however the first time you access this application there will be no records listed. You will have to use the **Add New** option to enter your requirements.

Lumen Car Red - Mozilla Firefox

File Edit View History Bookmarks Yahoo! Tools Help

http://setup1.lumensoftware.com/uplinkos/lumen.php Performance Systems International Inc

Faculty Portal Lilac Lumen Car Blue Lumen Car Red Portal - Idaho - 1.8

System Friday 10/12/2007 9:01 am

Health Records Management (Admin Access) - State Health Definitions

File View Search Clear Refresh Menu

State Immunization Compliance Parameters 0.015

Total: 4 [Print](#) [Delete](#) [Add New](#)

#	Immunization Requirement Code	Beginning Grade Level	Ending Grade Level	Immunization	Immunization Compliance Type	Parameter	
1	DTP	09	12	DP, DTaP, DTP	Cumulative Required by Grade Level	3	<input type="checkbox"/>
2	DTP	K	08	DP, DTaP, DTP	Cumulative Required by Grade Level	4	<input type="checkbox"/>
3	K		08		Cumulative Required by Grade Level	4	<input type="checkbox"/>
4	K		12		Time Lapse	3650	<input type="checkbox"/>

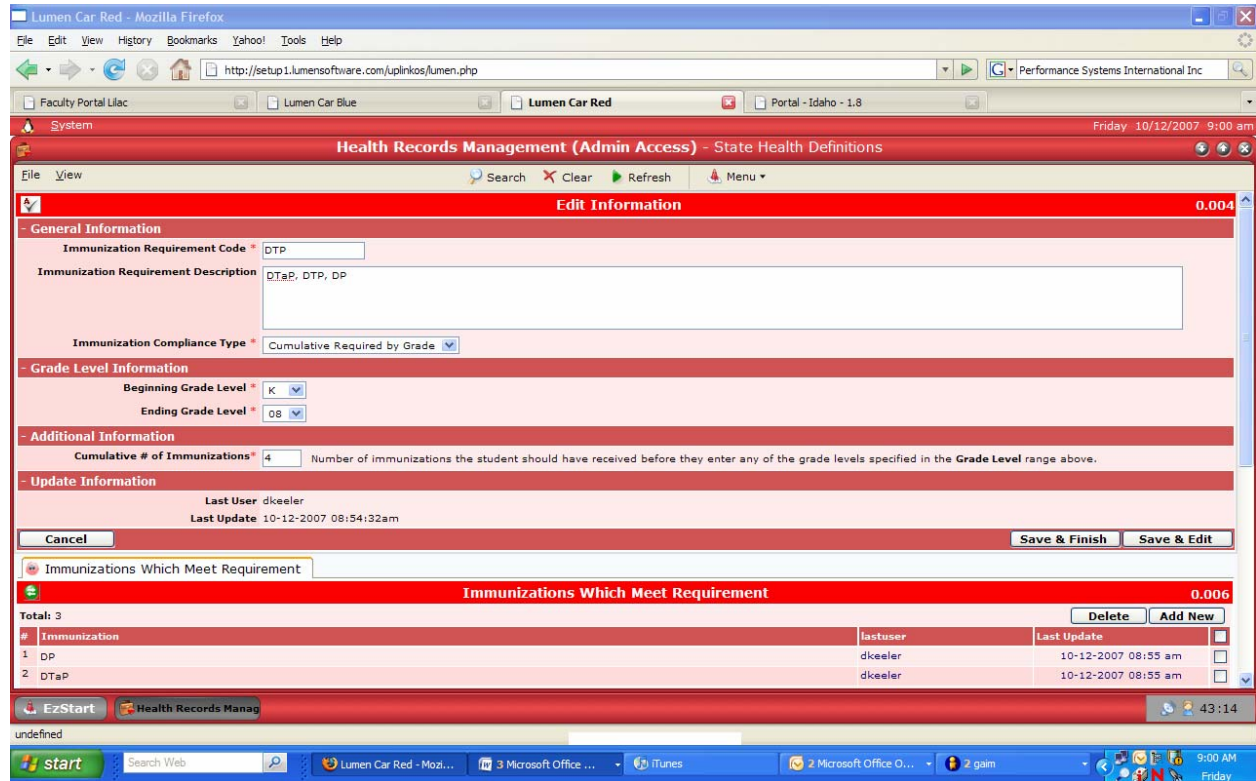
<< >> 1 of 1 Recs: 25

EzStart Health Records Manag 44:56

undefined

start Search Web 3 Microsoft Of... iTunes Inbox in dkeeler... Untitled - Messa... 2 gain Lumen Car Red ... 9:01 AM Friday

Below is a screen shot what will be presented when you are adding or editing a record to the **State Immunization Requirements**.



Field Descriptions

Immunization Requirement Code

Here you enter a code the WeBSIS system will use to recognize this state requirement. Often the state will have a code for this requirement already but if it does not you can assign your own such as "DTP".

Immunization Requirement Description

Here you enter a description the WeBSIS system will use to describe this state requirement. In the example above we have described this by the different immunizations that meet this requirement, "DTaP, DTP, DP".

Immunization Compliance Type

There are two types the system recognizes at this time.

Cumulative required by Grade Level indicates that the Immunization Requirement defined has to have had the indicated number of immunizations given to the student from the mmunizations defined as acceptable for the grade levels specified. An Immunization Requirement can be met in some cases by many different immunizations. For example, a state Diphtheria immunization

requirement could very well be met by a combination of DTaP, DTP or DT immunizations.

***Time Lapse** indicates that the Immunization Requirement has to be met within a specified time period by the immunizations defined as acceptable. For example, the Td immunization requirement is every 10 years a booster is required, thus the days = 3650 to represent 10 years and the allowed immunizations would contain the Td immunization only unless there is another which will also satisfy the requirement as defined by the state.*

Beginning Grade Level

This field identifies the beginning student grade level the Immunization Requirement being defined applies to.

Ending Grade Level

This field identifies the ending student grade level the Immunization Requirement being defined applies to.

IMPORTANT NOTE: Even though a state may report grade levels in groups such as DTP/DTaP/ DT for grade levels K – 2, 3 – 4, 5 – 8, 9 – 12 when the number of immunizations is four K – 8 and three 9 – 12. Thus you can define one Immunization Requirement to encompass K – 8 and not K – 2, 3 – 4, and 5 – 8 to achieve the same results.

Immunizations Which Meet Requirement *(tab)*

Under this tab is where you define the actual immunizations which meet the **Immunization Requirement** you have defined above.

In the screen shot above you can see this tab. Here you simply add the immunizations that will meet the immunization requirement you are defining.

Step 3 – State Immunization Non-Compliance Report

This report is to check a student’s immunization records for non-compliance and list all immunizations which are deemed not meeting compliance. This is found under the Health Reports menu.

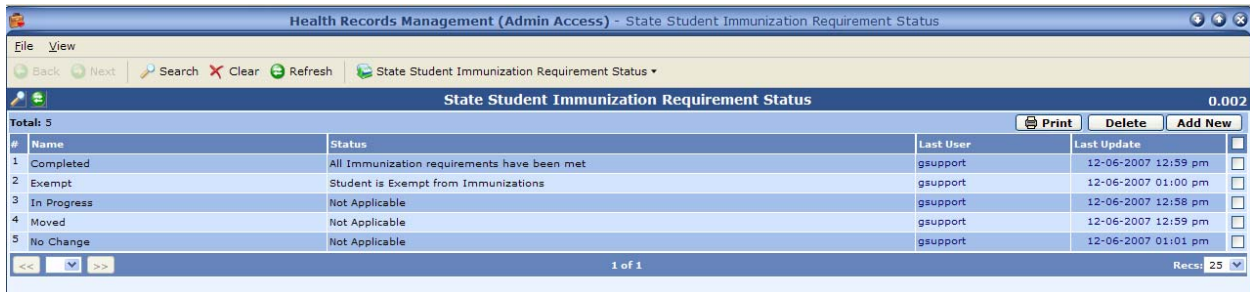
Step 4 – State Student Immunization Requirement Status Definitions table

Overview

This application defines the different Immunization statuses a student may be at for each State Immunization Requirement defined. For example, in Missouri there are statuses of;

- In Progress
- Completed
- Moved
- Exempt
- No Change

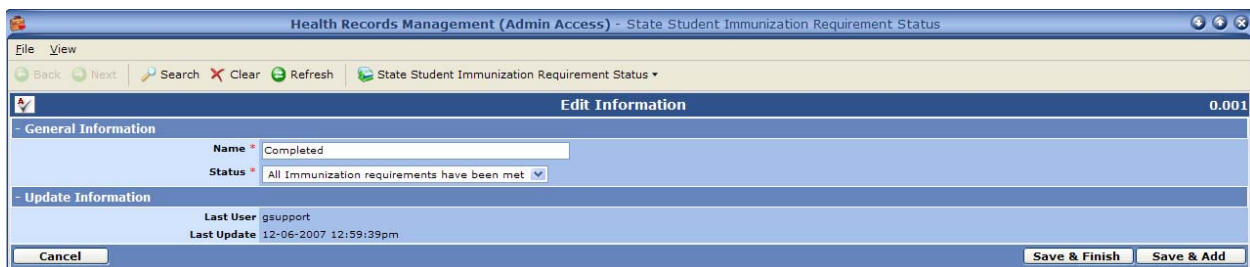
This application is found under the **District Health Management, State Health Definitions**. Below is a screen shot of this application.



#	Name	Status	Last User	Last Update
1	Completed	All Immunization requirements have been met	gsupport	12-06-2007 12:59 pm
2	Exempt	Student is Exempt from Immunizations	gsupport	12-06-2007 01:00 pm
3	In Progress	Not Applicable	gsupport	12-06-2007 12:58 pm
4	Moved	Not Applicable	gsupport	12-06-2007 12:59 pm
5	No Change	Not Applicable	gsupport	12-06-2007 01:01 pm

Selecting a record will then allow you to edit these records listed above or you may take the **Add**

New option to enter a new code. Below is a screen shot of the information required for these records.



Edit Information 0.001

General Information

Name * Completed
Status * All Immunization requirements have been met

Update Information

Last User gsupport
Last Update 12-06-2007 12:59:39pm

Buttons: Cancel, Save & Finish, Save & Add

Field Descriptions:

Status Indicates

This identifies the value which will be used to update status automatically in a mass update application. It allows the system for example to flag a student’s new **State Immunization Requirements** table records as **Completed** (system = All Immunization requirements have been met.) automatically if all state

immunization requirements are met for their current grade level. Also if the student under the **General Information** tab and **Exempt from Immunizations** = Yes then a student's **State Immunization Requirements** table records can be flagged as **Student is Exempt from Immunizations**.

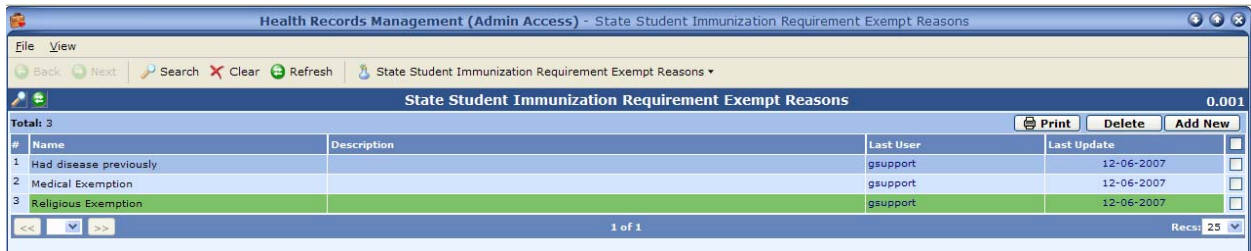
Step 5 – State Student Immunization Requirement Exempt Reasons Definition table

Overview

This application defines the different **State Student Immunization Requirement Exempt Reasons** to define the reason a student was exempt from an **Immunization Requirement**. For example,

- Had disease previously (Varicella – chicken pox)
- Medical Exemption
- Religious Exemption
- and any other.)

This application is found under the **District Health Management, State Health Definitions**.



The screenshot shows a web application interface for "Health Records Management (Admin Access) - State Student Immunization Requirement Exempt Reasons". The interface includes a navigation bar with "Back", "Next", "Search", "Clear", and "Refresh" buttons. Below the navigation bar is a table with the following data:

#	Name	Description	Last User	Last Update	
1	Had disease previously		gsupport	12-06-2007	<input type="checkbox"/>
2	Medical Exemption		gsupport	12-06-2007	<input type="checkbox"/>
3	Religious Exemption		gsupport	12-06-2007	<input type="checkbox"/>

The table also includes a "Total: 3" label, "Print", "Delete", and "Add New" buttons, and a "Recs: 25" dropdown menu at the bottom right.

Step 6 – Student State Immunization Requirement Status (State Immunization Status tab)
The **State Immunization Status** tracks a student’s state immunization status.

The screenshot displays the 'Student State Immunization Requirement Status' window for a student named Iesha Abbott. The window title is 'Lumen Health Records System' and the subtitle is 'Student Health Records'. The student's information is 'Student: Abbott, Iesha School Attending: Elementary School PK-5 Grade:04'. The 'State Immunization Status' tab is selected, showing a 'Summary Report' and 'Back' button. The main content area is divided into three sections: DTP, Hepatitis B, and MMR. Each section has a 'Status' dropdown menu (set to 'In Progress' for DTP), an 'Exempt Reason' dropdown menu, and an 'Exempt Comments' text area. Below each section, there are 'Immunizations' and 'Missing' counts. For DTP, Immunizations are [DTP:1] and Missing are [DTP:3]. For Hepatitis B, Immunizations are [Hepatitis B:1] and Missing are [Hepatitis B:2]. For MMR, there are no counts shown. The bottom of the window shows the Windows taskbar with 'EzStart', 'Health Records Manag', 'Lumen Health Records', and 'Health Records Manag' icons, and a system clock showing 43:33.

Above is a screen shot of the **Student State Immunization Requirement Status**;

1. The system will check to see if the student has all the **State Immunization Requirements** defined for their current grade level. If not the missing **State Immunization Requirement(s)** will be added to a student’s records for tracking. The **Student State Immunization Requirement Status** tab was created because it is necessary for districts in some states to track the status of a student who has not met all the requirements of a **State Immunization Requirement**.
2. Upon the user selecting the **State Immunization Status** tab the system checks each **State Immunization Requirement** based upon the students grade level and will update the students status to **Complete** in the Students state immunization status table if the student has met all the requirements. If a student *has not met* all requirements then the Students immunization status for the different State Immunization Requirements *will be left untouched*. The reason is that there are many different statuses to be selected by a user manually as to why a student has not met the requirement. The user needs to manually select the correct reason through the **State Immunization Status** tab.

Step 7 – Mass Update Student State Immunization Requirement Status

This application will be used to update the new **Student State Requirement Status** table.

1. If a student has completed all state immunization requirements for a state requirement code for their grade level the system will flag the record with the **State Student Immunization Requirement Status Definition** that is tied to the system value which indicates completed, **All Immunization requirements have been met.**

2. Also if the student under the **General Information** tab and **Exempt from Immunizations** = Yes then a student's **State Immunization Requirements** table records can be flagged as **Student is Exempt from Immunizations.**